

# ELASTIC COUPLINGS

## Models O and L

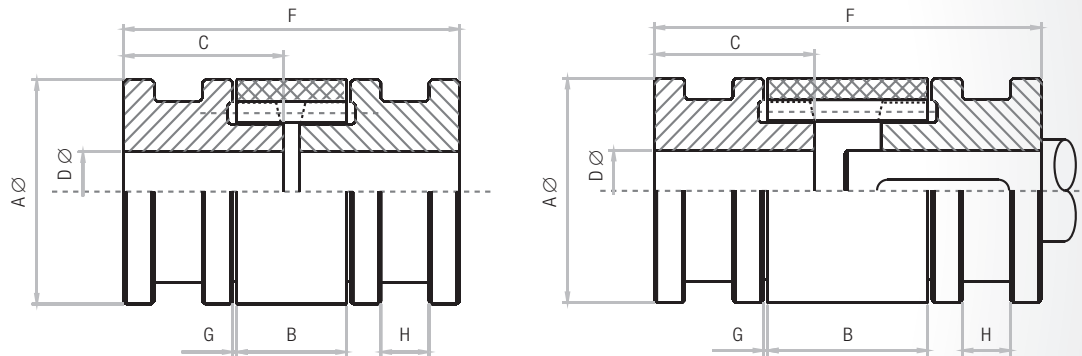
- **Economical**
- **Easy to install and align**
- **Strong and silent**
- **No maintenance required**
- **Elastic**



## Description

Elastic couplings **nil-uni3n O and L models** differ in the length of the crown. L model has the longest crown and is especially suitable for use between any receiving machine and an electric engine. A coupling pinion can be mounted on the engine shaft without putting in a supplementary cap. Thanks to the coupling length, the engine shaft is about 2 mm of the second coupling pinion. The trench (H) can be used to support the legs of an extractor.

### ASSEMBLY EXAMPLES



Type	A mm	B mm	C mm	D mm		E mm	G mm <sup>(1)</sup>	H mm	PAR Nm <sup>(2)</sup>	Max V. (rpm)	WEIGHT kg <sup>(3)</sup>	Z	
				min	max								
<b>010</b>	28	16	23	5	10	47	1	–	1,5	12.000	0,140	12	<b>ZAMAK</b>
<b>012</b>	32	17	25	6	12	51	1	–	2,4	12.000	0,200	12	
<b>014</b>	36	21	30	7	14	61	1	–	4,7	10.000	0,350	12	
<b>019 L19</b>	46	25 36	35	10	19	71 82	1	8	9,5	8.000	0,600 0,610	14	
<b>024 L24</b>	56	31 52	40	12	24	81 102	1	10	19	7.500	0,920 0,950	16	<b>CAST</b>
<b>030 L30</b>	66	37 51	50	14	30	102 116	1	12	38	7.000	2,080 2,100	16	
<b>038 L38</b>	84	41 60	60	16	38	124 140	1	18	95	6.500	3,300 3,450	16	
<b>042 L42</b>	92	47 87	70	18	42	140 183	1,5	18	118	5.500	4,940 5,090	18	
<b>050 L50</b>	106	51 84	80	24	50	164 193	1,5	20	166	4.000	7,600 7,730	20	
<b>060 L60</b>	122	60 110	90	28	60	181 230	1,5	25	237	3.500	11,250 11,370	24	