

Linear Measuring Technology

Draw wire mechanics with encoder

Draw wire encoder, Standard

Measuring length max. 6 m



These draw wire mechanics can be combined with all encoders having a size 58 synchro flange and 6 mm shaft.



Flexible and Simple

- Possibility for user to exchange encoder
- Measuring lengths 2800 mm or 6000 mm
- Simple installation

Order Code with encoder

D8.1 **XXX** . **XX** **XX** . **XXXX**
Type **a** **b** **c** **d** **e**

a Measuring range

106 = 6000 mm
2A1 = 2800 m

b Mounted encoder

05 = 5805 62 = 5862
2Z = 5000 60 = 5860
04 = 5804 63 = 5863
68 = 5868

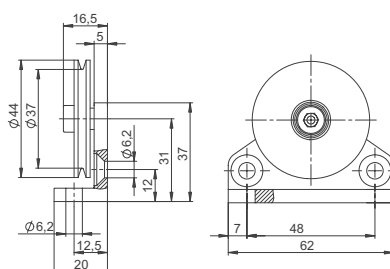
c Output circuit ¹⁾

d Type of connection ¹⁾

e Resolution / pulses / protocol ¹⁾

Accessories for draw-wire encoder

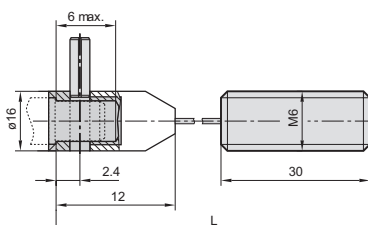
Guide pulley



Ordering information for the set
- Guide pulley (anodised aluminium)
- 2 x countersunk screws for lateral fixing,
- 2 x socket screws for fixing on a flat surface

8.0000.7000.0045

Extension cable



Steel wire 2 m

Steel wire 5 m

Steel wire 10 m

Paraleine 2 m

8.0000.7000.0033

8.0000.7000.0034

8.0000.7000.0035

8.0000.7000.0032

¹⁾ These data depend on the chosen encoder

Linear Measuring Technology

Draw wire mechanics with encoder	Draw wire encoder, Standard	Measuring length max. 6 m
----------------------------------	-----------------------------	---------------------------

Mechanical characteristics		
Measuring range	2800 mm / 6000 mm	
Traversing speed	max. 3000 mm/s	
Extension force F_{min}	8 N	
Repeat accuracy	± 0.15 mm	
Working temperature	$-20^{\circ}\text{C} \dots +80^{\circ}\text{C}$	
Weight	approx. 700 kg	
Drum circumference	200 mm	
Wire	2800 mm	paraleine (with $\varnothing 1.05$ mm)
	6000 mm	steel wire (with $\varnothing 0.54$ mm)

For the electrical characteristics as well as for the terminal assignment, please refer to the data sheet of the encoder used.

Dimensions

