

New generation linear guides

AKR20



AK208R



The AK range meets the market's need for a guide that is compact, high quality, versatile, and easy to install and maintain.

Advantages:

- 1) Very small overall dimensions
- 2) Double drive head for perfect guide symmetry and securing points on four sides for the reduction gear.
- 3) Patented locking and tensioning system that makes it possible to adjust and maintain the belt, working on two sides of the carriage and leaving the support surface free.
- 4) Side grooves for brackets and for proximity or other switches.
- 5) Possibility of using standard or longer carriages.

AK208R

This version has a roller guide and hardened, chrome-plated, not lubricated tracks ideal for: dirty environments (dust, swarf, abrasives, filaments, etc.), environments in which track lubrication may contaminate the product (paper and fabric machining, packaging, etc.) also when easy sliding is required.

AK208R INOX (stainless steel)

This is the version for the food industry and for corrosive environments (water, marine salt, steam, acids, etc.).

AKR20

This version has ball bearing guides for applications that call for even greater rigidity and a very narrow carriage.

AKR20 - AK208R

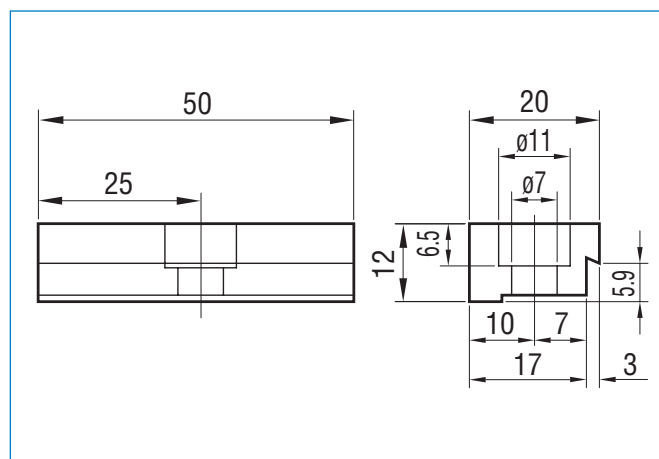
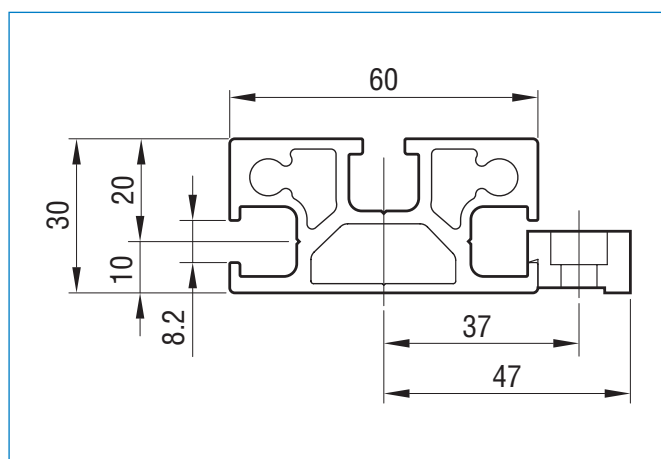
Construction

Section and connection

The basic structure of the AK range of guides consists of an extruded anodised aluminium section, measuring 30x60 with L_{max} 6000.

The two "T" slots formed in the sides can be used to anchor the entire linear guide using special fixing brackets.

The slots can also be used for plates with M5, M6 and M8 holes.



Ball bearing guide

One of the great advantages of the AKR20 range of linear guides is the possibility of fitting different models of track guides. In fact all size 20 guides can be easily fitted into the supporting section.

A plate devised by our company is fitted above the trolley. In addition to its basic support function, the plate also has a mechanism for tensioning the belt.

Roller guide

The AK208R range is fitted with a D10 type sliding track.

The guide is composed by an aluminium profile and two hardened, ground steel bars secured on the sides.

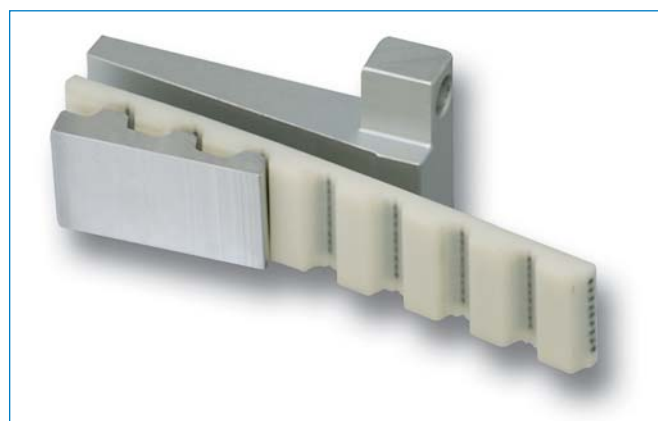
The trolley, which measures 130x130x20, has two concentric C208R wheels and two E208R eccentric wheels that can be adjusted to cause the trolley to slide by eliminating any play on the guide.

AKR20 - AK208R

Construction

The belt clamp

In order to provide driving force on both heads, a system has been devised for tensioning the carriage belt. As can be seen in the figure, a double wedge system grips the belt and does not allow it to slip by means of the teeth on the lower element.



The unit made up of two aluminium elements and one end of the belt is inserted into a specific slot in the trolley, where it is secured by means of two screws that are used for correct tensioning.

Transmission

The transmission belt used in AK range is the type AT10 in polyurethane with steel strand inside.

Its width is 16 mm and the maximum tensile strength is 2190 N.

The two drive heads have an 18 tooth pulley and a linear length of 180 mm per revolution.

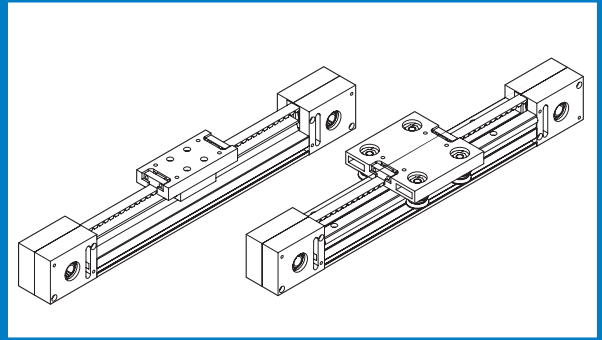
Pulleys for the AK range are available with a 12 mm and 14 mm diameter hole.

The reduction gear is connected through a special flange, centred on the head, which can be provided with various holes for different kinds of gears.

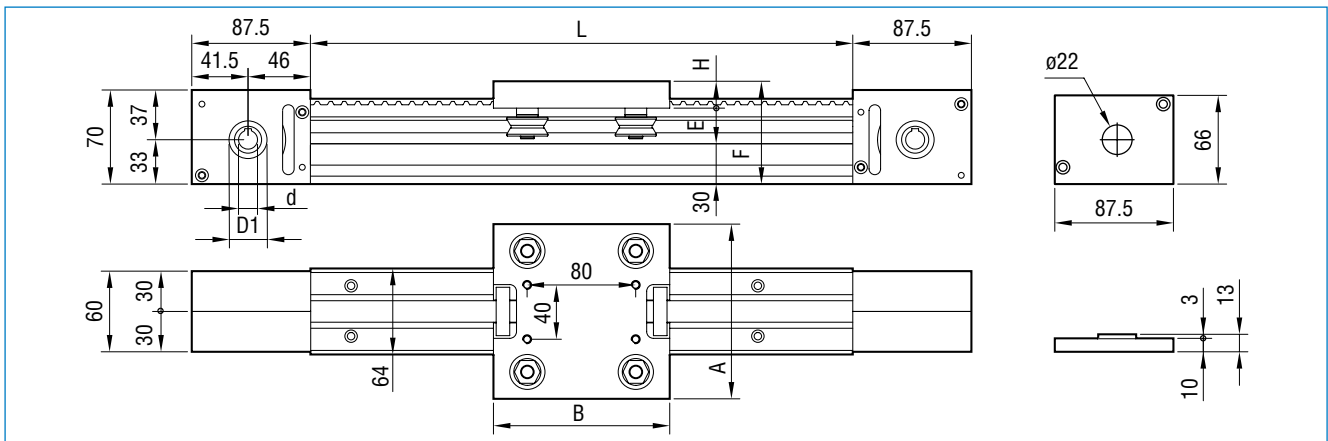


AK

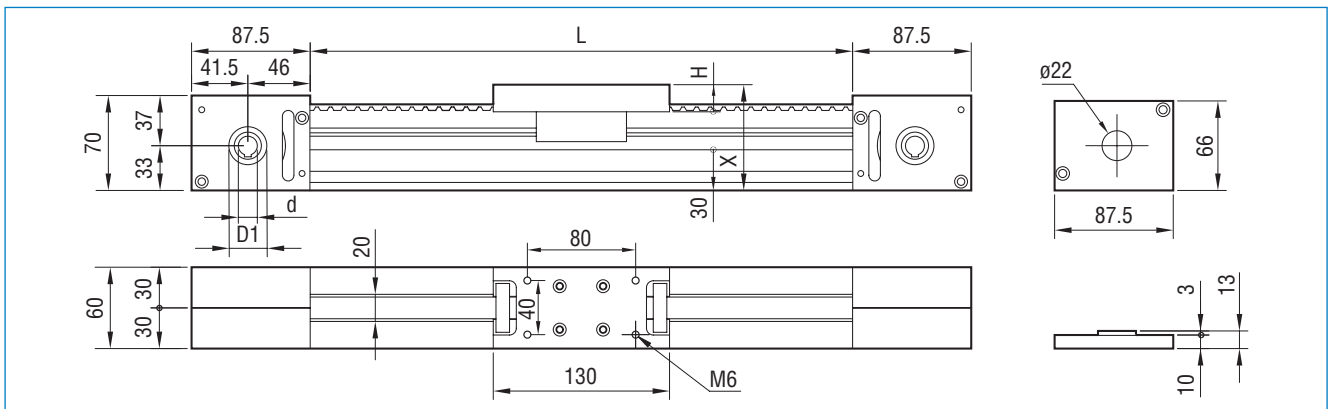
linear guide



www.gripa.it



Type	A	B	D1	E	H	F	d _{H7}	Belt AT 10/16		Trolley		Longitudinal development
								Tensile strenght	Ultimate strenght	Axial load	Radial load	
AK208R	130	130	28	26,6	20	76,6	ø12 ø14	2190 N	7480 N	1600 N	2000 N	180 mm



Type	D1	H	d _{H7}	Belt AT 10/16		Trolley		Longitudinal development
				Tensile strenght	Ultimate strenght	Axial load	Radial load	
AKR20	28	20	ø12 ø14	2190 N	7480 N	1600 N	2000 N	180 mm



20040 Briosco (MI) Italy - via Peregallo, 16
 Tel. +39 0362958479 - Fax +39 0362958689 - www.ctsitaly.it - e-mail: cts@ctsitaly.it